

## Schottky Barrier Rectifier

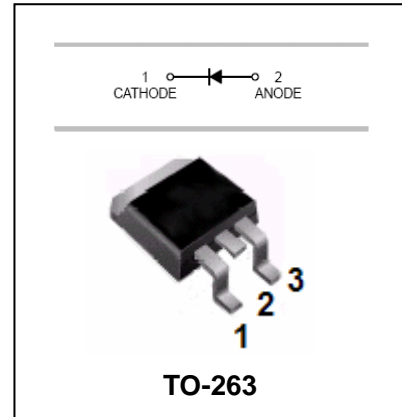
## SBLB2040

### FEATURES

- Mwtal-Semiconductor Junction with Guardring.
- Epitaxial Construction.
- Low Forward Voltage Drop,Low Switching Losses.
- High Surge Capability.
- For Use in Low Voltage,High Frequency Inverters Free Wheeling,and Polarity Protection Applications.
- The Plastic Material Carries U/L Recognition 94V-0.



Lead-free



### MAXIMUM RATING operating temperature range applies unless otherwise specified

Symbol	Parameter	SBLB2040	Unit
$V_{RRM}$	Recurrent Peak Reverse Voltage	40	V
$V_{RMS}$	RMS Reverse Voltage	28	V
$V_{DC}$	DC Blocking Voltage	40	V
$I_{F(AV)}$	Average Forward Total Device Rectified Current @ $T_A=100^{\circ}C$	20	A
$I_{FSM}$	Forward Surge Current 8.3ms Single Half Sine-wave Superimposed on Rated Load	250	A
$R_{\theta JC}$	Thermal Resistance (Note1)	1.5	$^{\circ}C/W$
$T_j$	Operating Junction Temperature Range	-55 to +125	$^{\circ}C$
$T_{stg}$	StorageTemperature Range	-55 to +150	$^{\circ}C$

Note:1.Thermal resistance from junction to case.



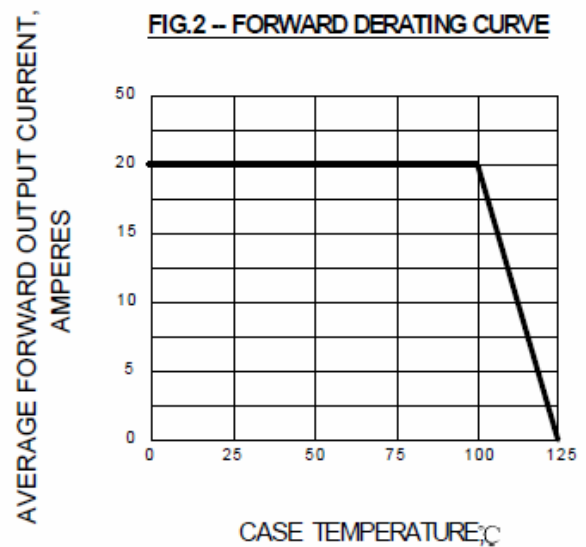
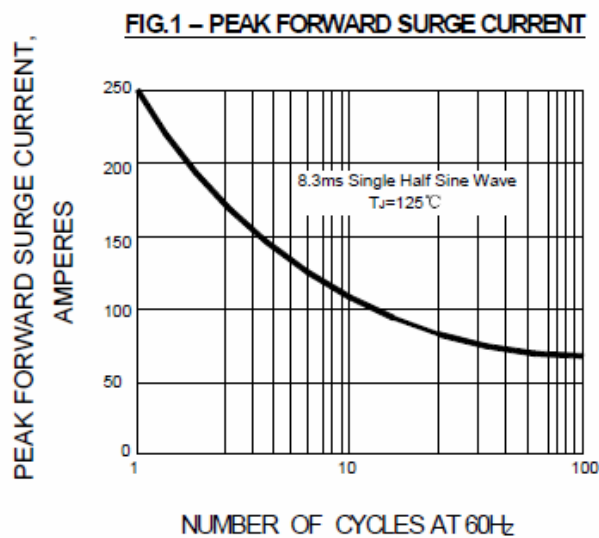
# Schottky Barrier Rectifier

# SBLB2040

ELECTRICAL CHARACTERISTICS @ Ta=25°C unless otherwise specified

Parameter	Symbol	Test conditions	SBLB2040	UNIT
			MAX	
Reverse Current	$I_R$	$V_R=V_{RRM}, T_A=25^\circ\text{C}$ $V_R=V_{RRM}, T_A=100^\circ\text{C}$	0.5 50	mA
Forward Voltage	$V_F$	$I_F=20\text{A}$	0.60	V

TYPICAL CHARACTERISTICS @ Ta=25°C unless otherwise specified



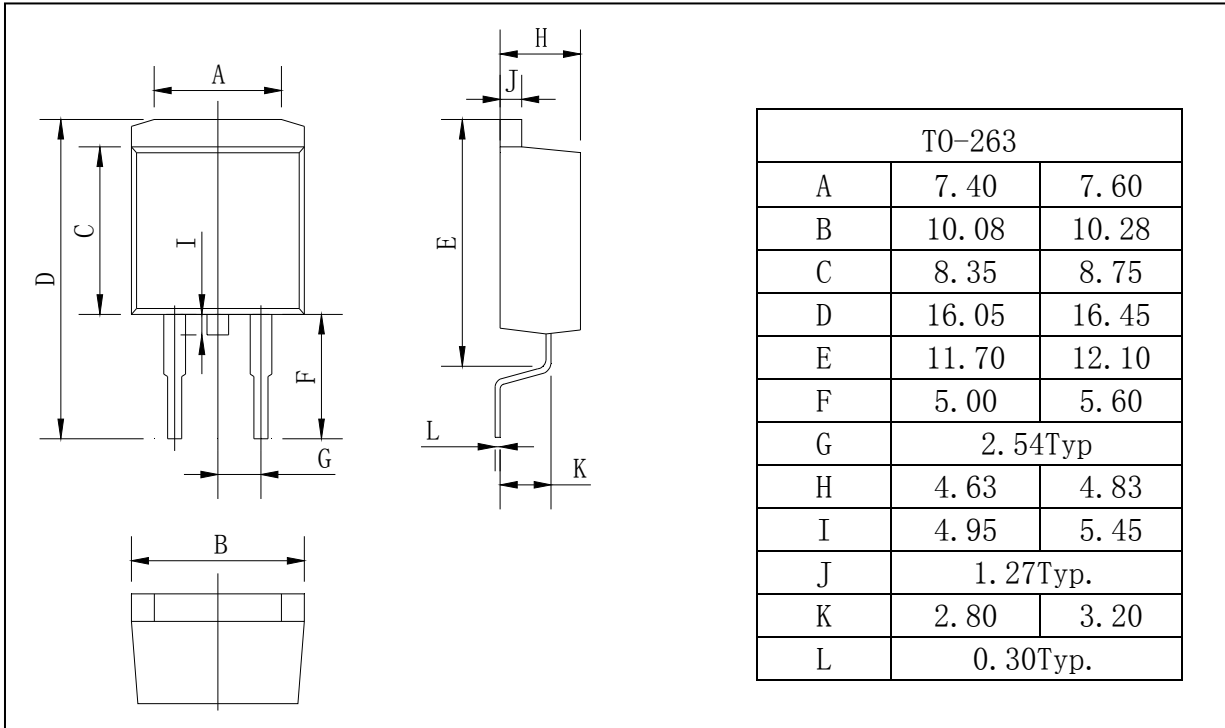
# Schottky Barrier Rectifier

# SBLB2040

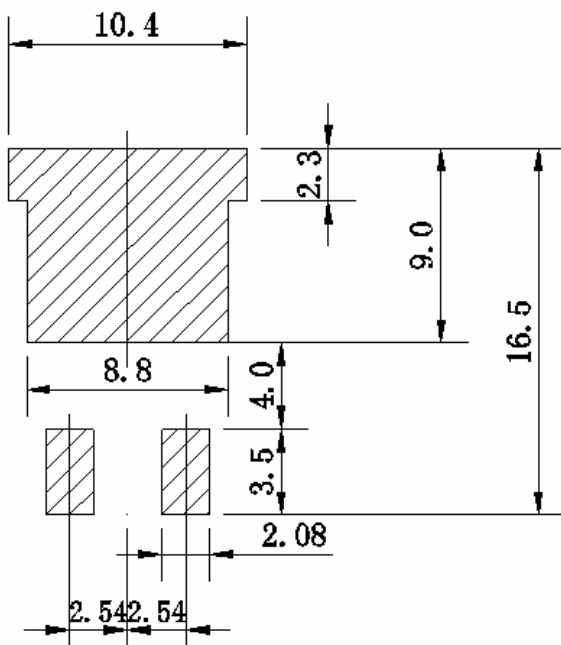
## PACKAGE OUTLINE

Plastic surface mounted package

TO-263



## SOLDERING FOOTPRINT



Unit:mm